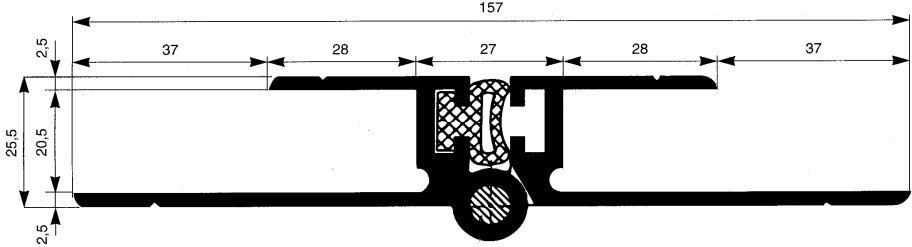
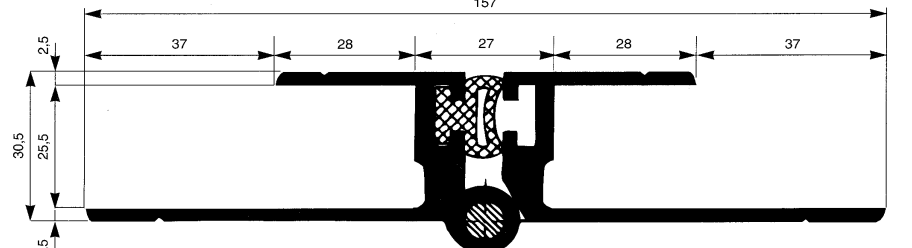
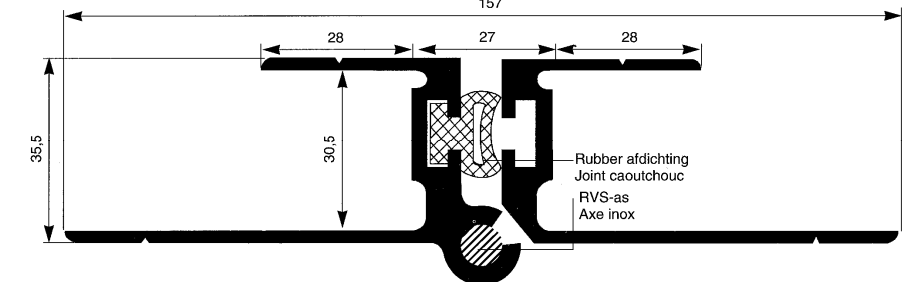
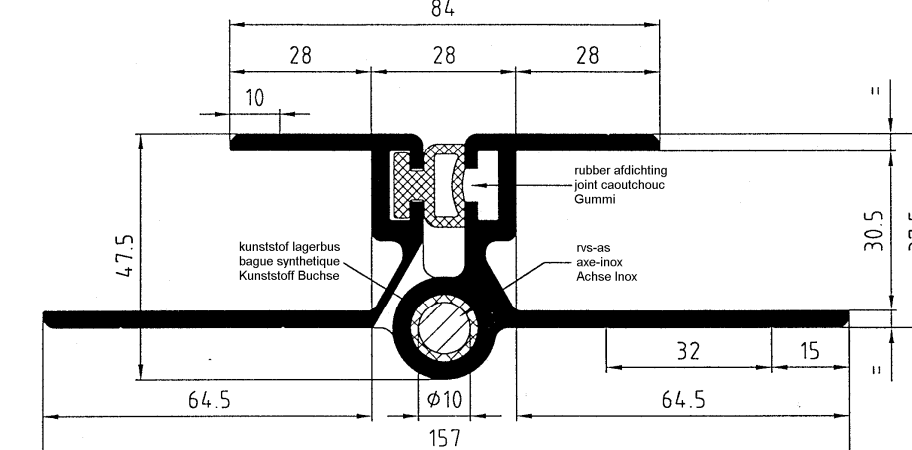


Alu deurscharnieren Charnières de porte Türscharniere alu	T-1-2
Sluitingen Fermeture Verschlüsse	T-1-3
Zijbordscharnieren Charnières de ridelles Bordwandscharniere	T-1-4
Bevestigingsstrip Barette de fixation Gewindeplatte	T-1-5
Alu vloerbinding / alu klemstuk Anneau d'arrimage / clamme de fixation Binding alu / Klemmgarnitur alu	T-1-6
Dichtingsprofielen Profilés de joint Dichtungsprofile	T-1-7

Scharnier compleet
Charnière complet
Scharnier komplett

20 – 25 - 30mm

T-1-2

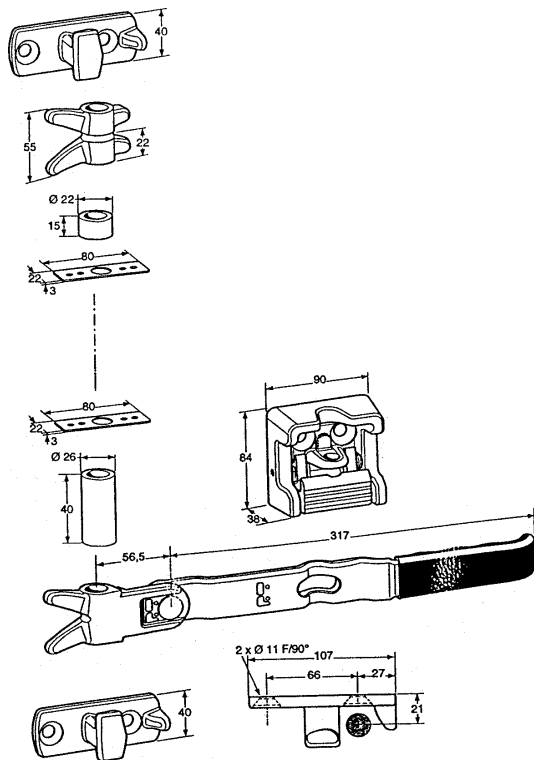
Kunststof as Axe synthétique Kunststoff Achse		RVS as Axe inox Inox Achse
<p>20 mm.</p> <p>AN 579 2,52 kg/m</p> <p>448340 2400 mm</p> <p>448380 3000 mm</p>		
<p>25 mm.</p> <p>AN 584 2,53 kg/m</p> <p>448540 2400 mm</p> <p>448580 3000 mm</p>		<p>25 mm.</p> <p>AN 825 2,93 kg/m</p> <p>449340 2400 mm</p> <p>449460 2800 mm</p> <p>449380 3000 mm</p>
	 <p>Rubber afdichting Joint caoutchouc RVS-as Axe inox</p>	<p>30 mm.</p> <p>AN 830 2,98 kg/m</p> <p>449740 2400 mm</p> <p>449780 3000 mm</p>
	 <p>kunststof lagerbus bague synthétique Kunststoff Buchse</p> <p>rubber afdichting joint caoutchouc Gummi</p> <p>rvs-as axe-inox Achse Inox</p>	<p>30 mm.</p> <p>AN 831 4,0 kg/m</p> <p>449760 2800 mm.</p>

Sluittingen Crémone Verschlüsse

T-1-3

Onderbouwcontainersluiting
Crémone
Unterbau-Drehstang-
verschuß
18 mm.

AN 785
6,50 kg/st-p
code
*



Onderbouwcontainersluiting
Crémone
Unterbau-Drehstang-
verschuß

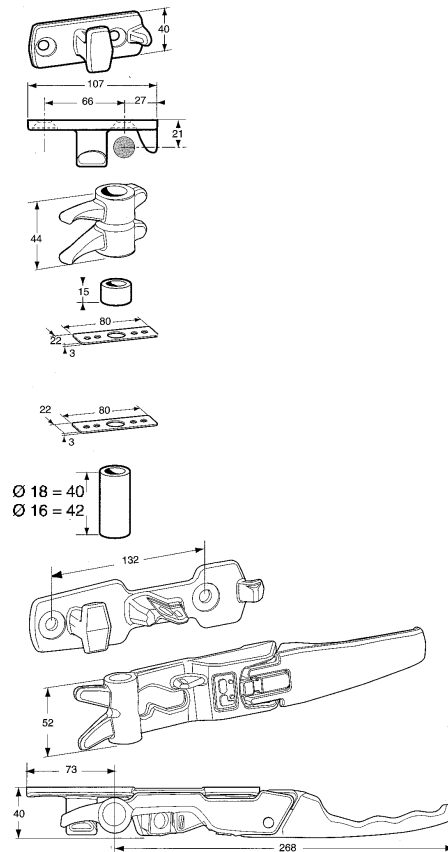
2,95 kg/st-p
Code T571
*

16 mm.

Onderbouwcontainersluiting
Crémone
Unterbau-Drehstang-
verschuß

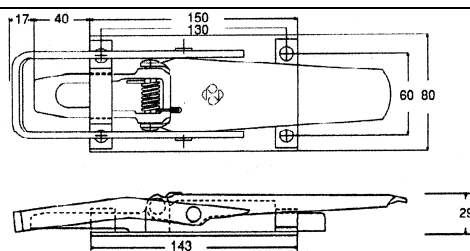
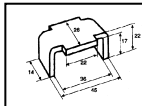
2,95 kg/st-p
Code T572
647217

18 mm.



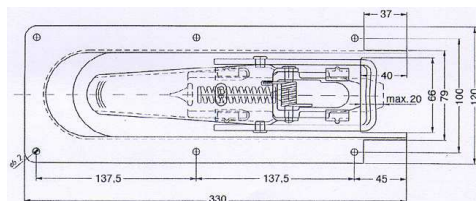
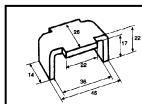
145560
1,06 kg/st-p
code
442540

Opbouwsluiting Staal - verzinkt
Fermeture acier zingué
Aufbauverschluss Stahl verzinkt
+
Tegenstuk staal
Gâche acier
Gegenstück Stahl



145575
1,47
kg/st-p
code
442545

Inbouwsluiting Staal - verzinkt
Fermeture à encastrer acier
zingué
Einbauverschluss Stahl verzinkt
+
Tegenstuk staal
Gâche acier
Gegenstück Stahl



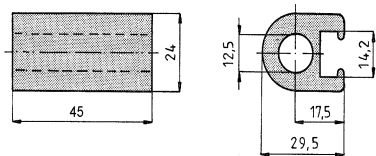
Zijbordscharnieren

Charnières de ridelles

Bordwandscharniere

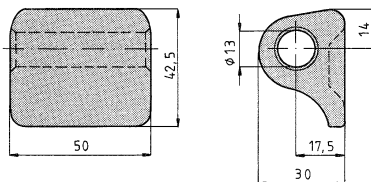
T-1-4

Scharnierroog aluminium
Support en aluminium
Scharnierlager Aluminium



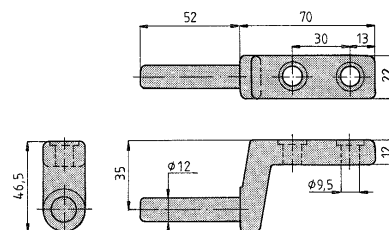
AG 1526-09 code
0,12 kg/st-p **443031**

Scharnierroog staal
Support en fonte
Scharnierlager Stahl



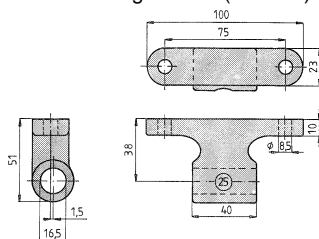
A-53/551 code
0,24 kg/st-p **442162**

Scharnierduim staal-verzinkt
Doigt de charnière acier zingué
Scharnierbolzen Stahl verzinkt



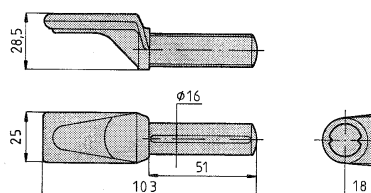
A-53/549 code
0,22 kg/st-p **442161**

Scharnierroog staal verzinkt
Support acier galvanisé
Scharnierlager Stahl (verzinkt)



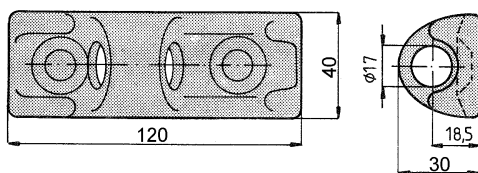
A-6552 code
0,32 kg/st-p **442102**

Scharnierduim
Doigt de charnière
Scharnierbolzen



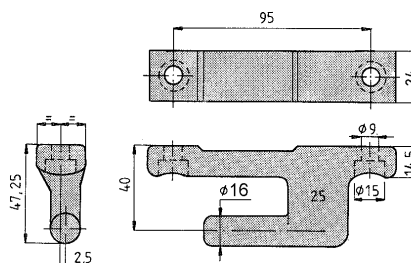
H-6550 code
0,20 kg/st-p **442101**

Scharnierroog staal
Support acier
Scharnierlager Stahl



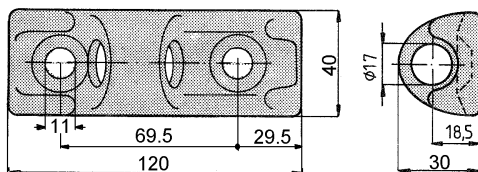
A-6540 code
0,33 kg/st-p **442011**

Scharnierduim staal-verzinkt
Doigt de charnière
Scharnierbolzen Stahl-verzinkt



A-6541 code
0,40 kg/st-p **442072**

Scharnierroog staal verzinkt
Support acier galvanisé
Scharnierlager Stahl (verzinkt)



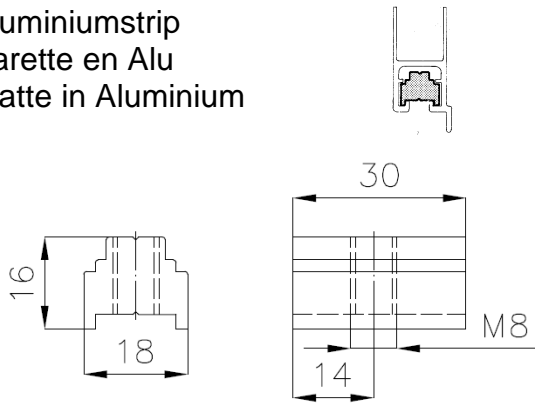
A-6540 code
0,33 kg/st-p **442010**

Bevestigingsstrip Barette de fixation Gewindeplatte

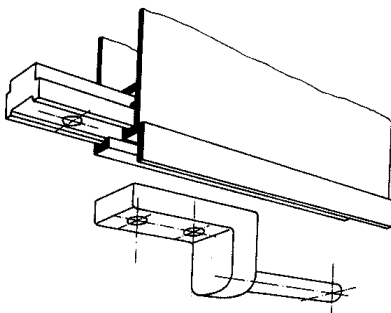
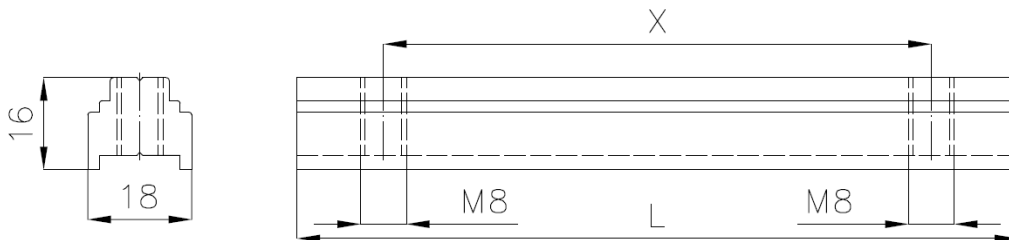
T-1-5

Aluminiumstrip
Barette en Alu
Platte in Aluminium

UNILOCK 25 mm / ET 25 mm



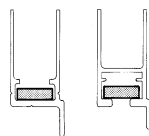
AN595
0,017 kg/st-p
code
642209



AN	Code *	L (mm)	X (mm)	kg/st-p
596	642210 *	100	30	0,05
597	642211 *	120	75	0,07
598	642212 *	125	95	0,07
672	*	110	70	0,06

* op aanvraag / sur demande / auf Anfrage

Staalverzinkstrip
Barette acier zingué
Platte in verzink Stahl



<p>A-53/593 0,07 kg/st-p code 442170</p>	<p>A-6543 0,10 kg/st-p code 442080</p>	<p>A-6542 0,12 kg/st-p code 442065</p>

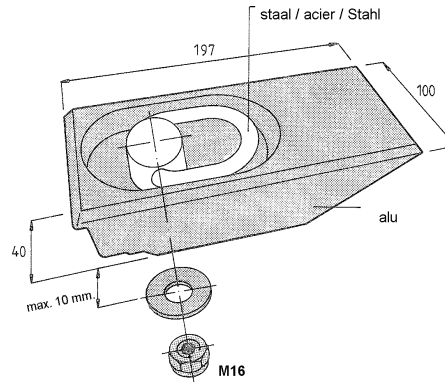
Toebehoren laadbak

Accessoires de plateau

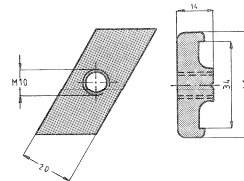
Zubehör Pritsche

T-1-6

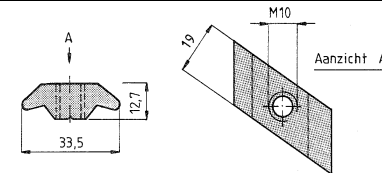
AG 2679-02 Vloerbinding aluminium/staal
 1,26 kg/st-p Anneau d'arrimage alu / acier
 code plancher
446020 Alu / Stahl Binding Boden



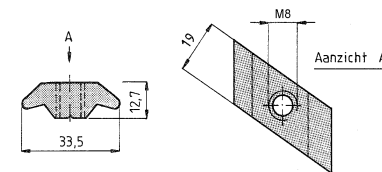
AG 5349-94 Alu-klemstuk voor bevestiging
 0,02 kg/st-p Clamme de fixation en aluminium
 code Klemmgarnitur Alu
446031



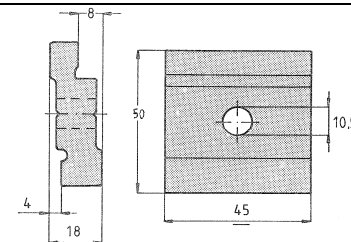
AG 6422-90 **M10** Alu-klemstuk voor bevestiging
 0,02 kg/st-p Clamme de fixation en aluminium
 code Klemmgarnitur Alu
646069



AN 759 **M8** Alu-klemstuk voor bevestiging
 0,02 kg/st-p Clamme de fixation en aluminium
 code Klemmgarnitur Alu
646070



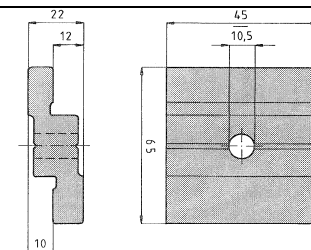
AG4854-97 Klemstuk in aluminium
 0,08 kg/st-p Clamme de fixation
 code Klemmgarnitur
446026



Chassis dikte
 Pour chassis
 Chassis dicke

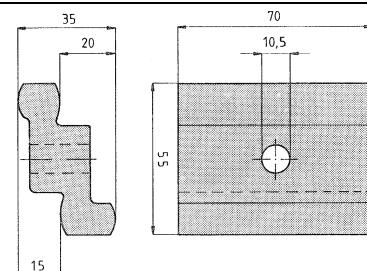
4mm
 8 mm.

AN 635 Klemstuk in aluminium
 0,1 kg/st-p Clamme de fixation en aluminium
 code Klemmgarnitur Alu
641801



10mm
 12 mm.

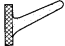













AG4855-94 Klemstuk in aluminium
 0,11 kg/st-p Clamme de fixation en aluminium
 code Klemmgarnitur Alu
 *



20mm
 15 mm.

Dichtingsprofielen
Profils de joint
Dichtungsprofile

T-1-7

Profiel nr. Nr. de profil Profil Nr.	Gewicht Poids Gewicht	Symbol Symbole Symbol	Past in profiel Convient aux profilés Für Profil	Lengte Longueur Länge Code
AN 8 AS	0,10 kg/m		FL22243 FL27093 FL22521 FL22787 FL27224 DC07335	100 m 444020
AG 1332	0,05 kg/m		FL08268 DC07518 FL10451 DC10507	100 m 445020
AN 587	0,11 kg/m		DC10513 FL07438 DC07554	40 m 444031
AN 768	0,11 kg/m		DC10513 DC07554	*
AN 625	0,15 kg/m		FL05738 DC07847 FL26494 DC07849	50 m 646101
AN 502	0,20 kg/m		FL07689 FL01494	50 m 444010
AN 758	0,13 kg/m		DC08011	*
AN 575	0,56 kg/m		DC08220 FL07313 FL11677 FL22427 FL08062	6,50 m 444055
AN 879	0,10 kg/m		DC07879	100 m 440800
AN 757	0,18 kg/m		FL26637 FL26638	50 m 444355
AN 621	0,78 kg/m		FL08946 FL30205	28 m 642303
AN 736	0,38 kg/m		FL25245	30 m 444090
AG4491-05	0,50 kg/m		AL03607	6,50 m *
CVT4030090	0,42 kg/m			30 m 440810

* op aanvraag / sur demande / auf Anfrage